

2700 Series

Installation Instructions

2700A/2700AT: Position magnet and switch so that the labels read in the same direction and the JR S on the magnet aligns directly with the S on the switch. The set-up gap distance is 0.3" (0.76 cm). Switches will operate at approximately 0" (0 cm) to 0.75" (1.91 cm) on closing and go into alarm at approximately 0.75" (1.91 cm) on opening. There is no minimum gap. However, environmental conditions, such as thickness of the metal to which the switch and magnet attach, may alter the maximum gap distance. Therefore, we recommend the following installation method:

2700A: 1. Connect an Ohmmeter across the Closed Loop and Common lines. Bring the magnet toward the switch until the meter reads 0 Ohms. Do not mount the magnet beyond this point less some reasonable clearance to insure reliable operation.

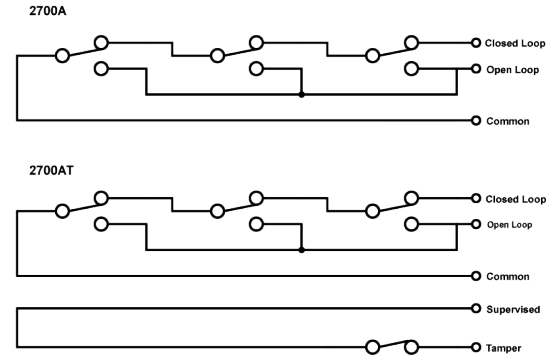
2. Pre-drill the mounting holes.

3. Mount the switch to the surface.

2700AT: Follow steps 1 through 2 as outlined for the 2700E model. Install the Pry Tamper plate under the switch with two #6 x 3/4" flat head screws. Connect the Super and Tamper leads to the 24-hour circuit. The Pry Tamper plate is required for Certified Safe and Vault applications.

If a Pry Tamper is not used, discard the tamper plate and mount the switch directly to the surface. Be sure to connect the Super and Tamper leads to the 24-hour circuit.

Wiring



Note: Circuits shown with magnet in secure position.

Ordering Information

Part Number	Loop Type	Electrical Configuration	Gap Distance (Make)
2700A	Open or Closed	SPDT	0" to 0.75"
2700AT	Open or Closed	SPDT	0" to 0.75"



G/F 80-81 Nam Shan Village, Sai Kung, Hong Kong
<http://www.jrmagnetics.com>